

AUROLA

DINING ARMCHAIR



AURORA DINING ARMCHAIR

Designer	George Tsironas
Dimensions	W59 x D64 x H80 - SH49 cm
Materials	Powder coated aluminum frame Seat and back cushions upholstered in fabric or eco leather
Weight	7.25 kg
Volume	0.3 m ³
Option	Armrests in tropical wood / Armrests in aluminum / Woven belt 45x18mm / Woven cord ø5



Sustainability

10DEKA prioritizes its ecological footprint by using recyclable materials and manufacturing practices to minimize the waste and the energy consumption, while continuously expanding the range of eco-friendly products. Our stringent adherence to global standards ensures that our products meet rigorous criteria for strength, durability, and safety.

Warranty

10DEKA offers a 2-year warranty on its products, valid ONLY with proper use. It excludes faults from normal wear and tear. If a manufacturing defect is found, the company will decide to repair or replace the product. For more information, please reach out to our sales team.



AURORA DINING ARMCHAIR

Fabrics



F11 Coco 8001 F12 Grafito 8013 F13 Lino 8008 F14 Marfin 3741



F16 Perla 3735 F19 Brisa Blue 3736 F20 Brisa Grey 3730 F28 Brisa 8011



F29 Optic 3934 F32 Aqua 8006 F39 Mineral 1442 F92 Umbra 20203



F93 Nectar 20200 F94 Scarlet 3947 F95 Apio 20201 F96 Gris Porcelana 20099



F97 Salvia 20081 F98 Fossil 3659 F99 Alga 3667 F100 Stone Grey 3669



F127 Ash Grey PVC F128 Greige PVC F26 Clara 3950 F76 Mostaza 1732



F77 Integral 1734 F78 Piedra 1730 F84 Avera 1712 F85 Gris 1714



F87 Stone 1709 F88 Brisa 1706 F101 Musgo 1701 F102 Mostaza 1713



F103 Ice 20234 F104 Albero 20238 F105 Fresh 20239 F106 Copper 20240



F107 Denim 20242 F113 Terra Stripes 00 F114 Sand Stripes 96 F115 Denim Stripes 98



F116 Terra Pinstripes 18 F117 Sand Pinstripes 14 F118 Denim Pinstripes 16

Maintenance

Regularly vacuum your furniture using the upholstery nozzle to remove dust and prevent fluff and pilling. Occasionally, straighten the fabric with your hands. To smooth out wrinkles, use a steamer. If liquids spill, immediately blot the area with an absorbent napkin or cloth, dabbing gently towards the center of the stain. Avoid using concentrated detergents, bleach, ammonia, optical brighteners, or soaps meant for hard surfaces. Spot cleaning is not recommended as it can damage the fabric and cause color loss. For wool fabrics, most stains can be removed with lukewarm water and a clean, lint-free cloth. If needed, add a small amount of neutral detergent. Do not rub the material vigorously, as this can cause color loss and fabric damage. Using a hairdryer may help to prevent water marks. If a stain persists, consult a professional cleaner.

AURORA DINING ARMCHAIR

Fabrics



F89 Gris 1742



F90 Glacier 1740



F91 Grafito 1739

F111 Ottoman
Apio 20069F112 Ottoman
Umbra 20071

F119 Sky 01



F120 Sky 22



F121 Sky 03



F122 Sky 07



F123 Sky 11



F124 Sky 23



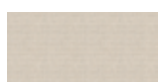
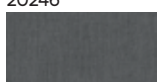
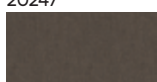
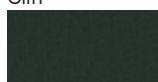
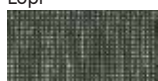
F125 Sky 20



F126 Sky 21

F108 Papyrus
20246F109 Grey Sand
20247

F110 Optik 20245

CLI B123 Obvious
CliffCLI B126 Slate
CliffCLI B128 Jacket
CliffCLI B129 Petra
CliffCLI B131 Fir
CliffLOP2 R079 Bud
LopiLOP2 R081 Fawn
LopiLOP2 R082 Pepper
LopiLOP2 R085 Viper
LopiLOP2 R086 Fossil
LopiSLO 19011 Farafra
SlowSLO 19103 Alezan
SlowSLO 19106 Fern
SlowSLO 19107 Spirea
Slow

Eco Leather



L1 Beige



L2 Beige Olive



L3 Ivory



L4 White



L5 Blue



L6 Graphite



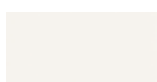
L7 Light Grey



L21 Ebony



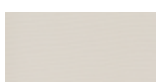
L22 Ash



L23 Ice



L24 Ocean



L25 Pearl



L26 Shark



L27 Terracotta



L28 Toffee



L29 Walnut

AURORA DINING ARMCHAIR

Frame Colors



White Sabbia Beige Dark Brown



Light Grey Cloud Grey Graphite Turquoise Blue



Royal Blue Denim Blue Olive Green Saumon Orange



Rouge Beige Rouge Royal Tanami Red Brown Amber

Wood Finishes



Teak Iroko Vintage Grey

Cords-Litus/Naida/Aurora

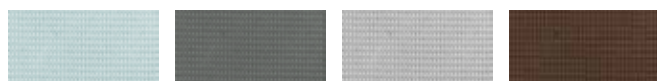


Dark Brown Grey Brown Fishbone Light Grey Brown Beige



Olive Green Royal Blue

Cords-Sensoria/Curacao/Aurora



Pastel Turquoise Basalt Grey Grey Brown



Terracotta